

# DIY DESIGN OFFLINE

## General Notes

### File types

You can upload your design in any of the following file types:  
**.png, .svg, .jpg, .jpeg, .pdf, .psd, .gif or .bmp**

### Text size

We suggest a minimum font size of **8pt** for most fonts.

### Imagery

Photography and Graphics need to have a minimum resolution of 300dpi and the file size should be maximum 100mb.

### Print area

For **Single Colour Hotfoil Printing** – Please create your design as large as possible within the template print areas, to give your artwork the best chance of printing clearly.  
It would be helpful if you could create your designs in black and white.

For **Full Colour Digital Printing on Neapolitans** – You can print anywhere on the paper band wrapper but please keep in mind that the paper band will fold around the chocolate, with a front, side edges and back, so you may wish to consider carefully what to place on the front and back and also to place content (e.g your logo, graphics, text) within the dashed print areas to avoid running over the fold and onto the side edges.

**We will check all artworks before manufacturing,  
and inform you if any designs look unsuitable for printing.**

## DIY Design Offline

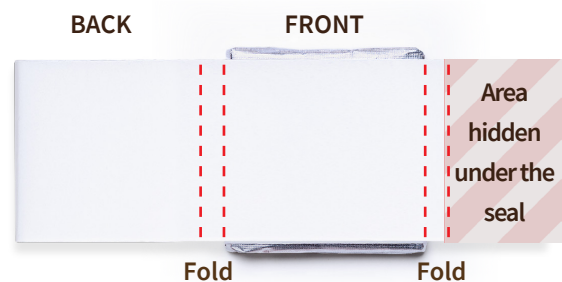
# Neapolitan Chocolates - Full Colour Print

Full Colour digital print design... photography and graphics need to have a minimum resolution of 300dpi and the file size should be maximum 100mb.

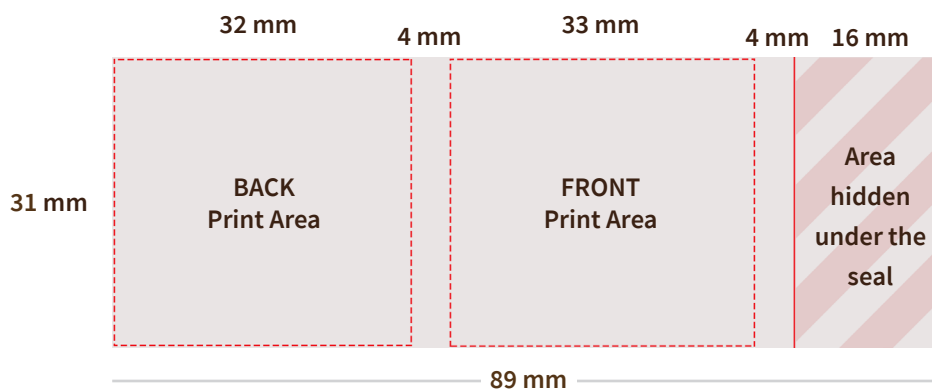
## Print dimensions

For Full Colour printing on the Neapolitans your design can cover the whole paper band wrapper (or as much of it as you wish to use), though we recommend giving consideration to keeping within the given print areas on the front and/or the back, to avoid the edges/fold.

## Template context



## Template print areas



## DIY Design Offline

# Neapolitan Chocolates - Single Colour Print

Single Colour hot foil print design... there are times where very fine intricate detail may be lost and thin spaces between artwork tend to fill in. Lines should be .25 point (or .003") or thicker. We recommend avoiding reverses for hot foil printing.

Please prepare your design in Black & White and make it as large as possible, filling the whole print area, with a minimum resolution of 300dpi and a maximum file size of 100mb.

## Print aspect

For Single Colour printing you can design in any aspect - vertically, horizontally etc.

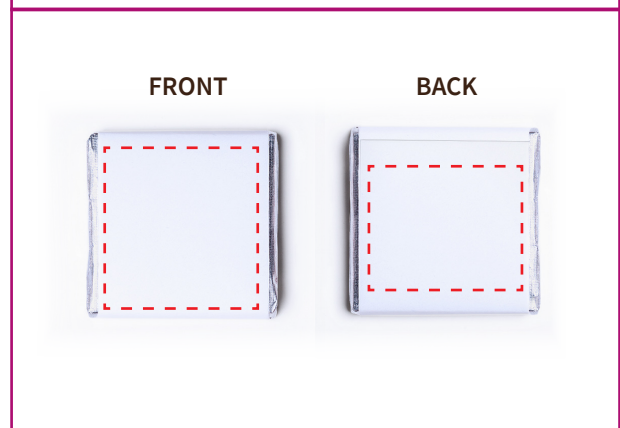
## Print dimensions

For Single Colour printing you can print on the front and/or the back of the paper band wrapper within the 'Print areas' only.

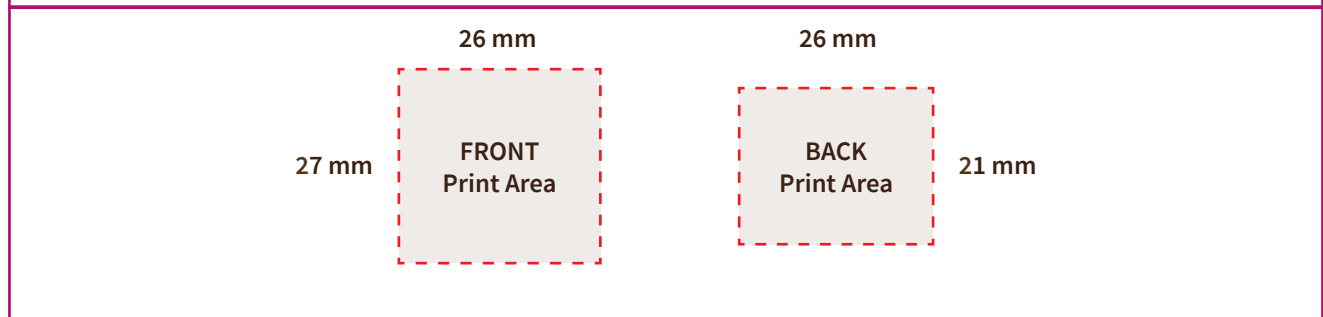
**Front:** 26 x 27 mm

**Back:** 26 x 21 mm

## Template context



## Template print areas



---

## DIY Design Offline

# Petit Chocolates - Single Colour Print

Single Colour hot foil print design... there are times where very fine intricate detail may be lost and thin spaces between artwork tend to fill in. Lines should be .25 point (or .003") or thicker. We recommend avoiding reverses for hot foil printing.

Please prepare your design in Black & White and make it as large as possible, filling the whole print area, with a minimum resolution of 300dpi and a maximum file size of 100mb. (Full colour digital printing is also available for Petit Chocolates, please contact us for details.)

### Print aspect

You can design in any aspect - vertically, horizontally etc.

### Print dimensions

You can print on the front of the Petit Chocolate foil wrapper only, within the given print area.

(Please note that the print area is smaller than the wrapper.)

**Front:** 37 x 20 mm

### Template context

FRONT



### Template print areas

37 mm

20 mm

FRONT  
Print Area



---

## DIY Design Offline

# Confectionery - Single Colour Print

Single Colour thermal transfer print design... please prepare your design in Black & White and make it as large as possible, filling the whole print area, with a minimum resolution of 300dpi and a maximum file size of 100mb. (Full colour digital printing is also available for Confectionery, please contact us for details.)

### Print aspect

You can design in any aspect - vertically, horizontally etc.

### Print dimensions

You can print within the given print areas on the front and/or back of the Confectionery wrapper.

(Please note that the print areas are smaller than the wrapper.)

**Front:** 30 x 20 mm

**Back-upper:** 30 x 10 mm

**Back-lower (below the seal):** 30 x 5 mm

### Template context

FRONT



BACK-UPPER

BACK-LOWER



### Template print areas

